



## Environmental Justice (EJ) Advisory Committee Meeting #3 (Hybrid)

Tuesday, March 17, 2026  
5:30 p.m. to 6:45 p.m.

**Address:** 400 S. Imperial Ave., Imperial, CA 92251

**Meeting Room:** EOC (Building is located North of the City Hall)

**Zoom Meeting Link:** <https://us06web.zoom.us/j/88226952938>

**Meeting ID:** 882 2695 2938

**Phone #:** 888 788 0099 (US Toll-free)

### AGENDA

TIME	ITEM
5:30 pm	<b>Welcome and Agenda Review</b>
5:40 pm	<b>Participant Introductions</b>
5:45 pm	<b>Environmental Justice Project Progress Update</b>
5:55 pm	<b>Overview of the EJ Element Framework</b>
6:05 pm	<b>EJ Element Framework: Large Group Discussion</b>
6:40 pm	<b>Wrap up and Next Steps</b>
6:45 pm	<b>End</b>

# The City of Imperial

## Environmental Justice Element Development

### Advisory Committee Meeting #3



**Tuesday, March 17, 2026**  
**5:30 – 6:45 pm**  
**Hybrid**



INTRODUCTION



**Yvonne Cordero**  
Planner,  
City of Imperial



**Hanna Stelmakhovych**  
Program Manager,  
ILG



**Jon Barilone**  
Senior Program  
Manager,  
IIG

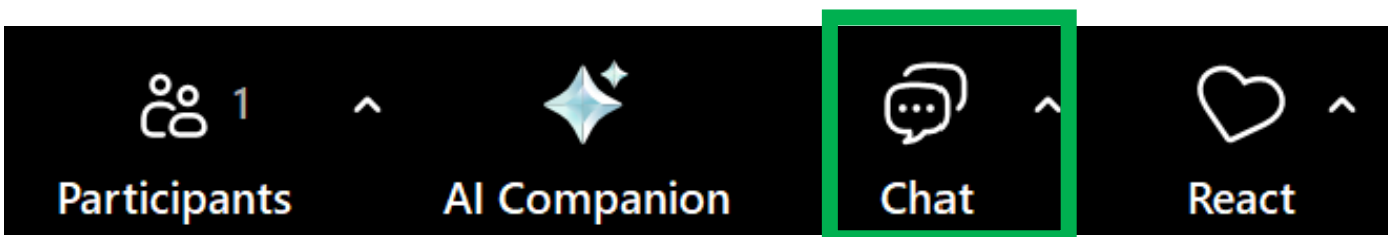
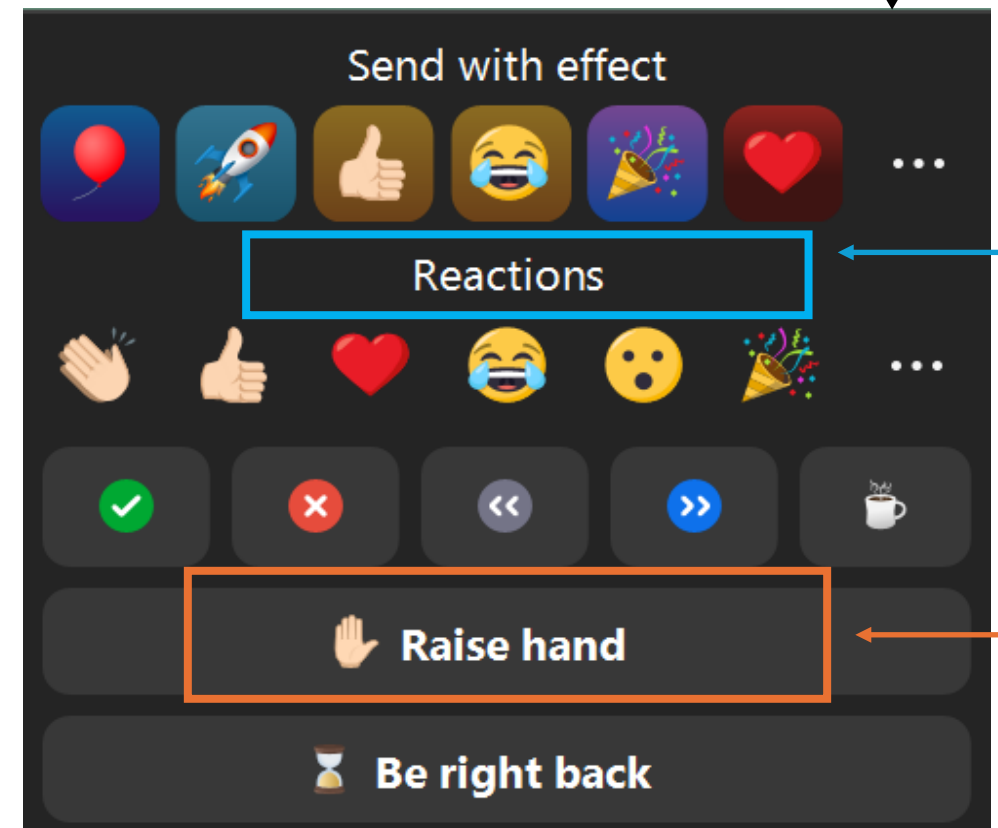
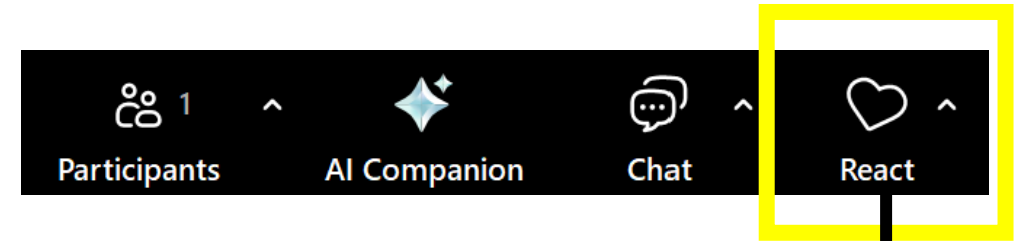


# ZOOM CONTROLS: COMPUTER/LAPTOP

Click **REACT** → **RAISE HAND** if you would like to talk

Click **REACT** → **REACTIONS** if you want to share your reactions

Please type into the **CHAT** box at any time during the meeting if you have something to share.



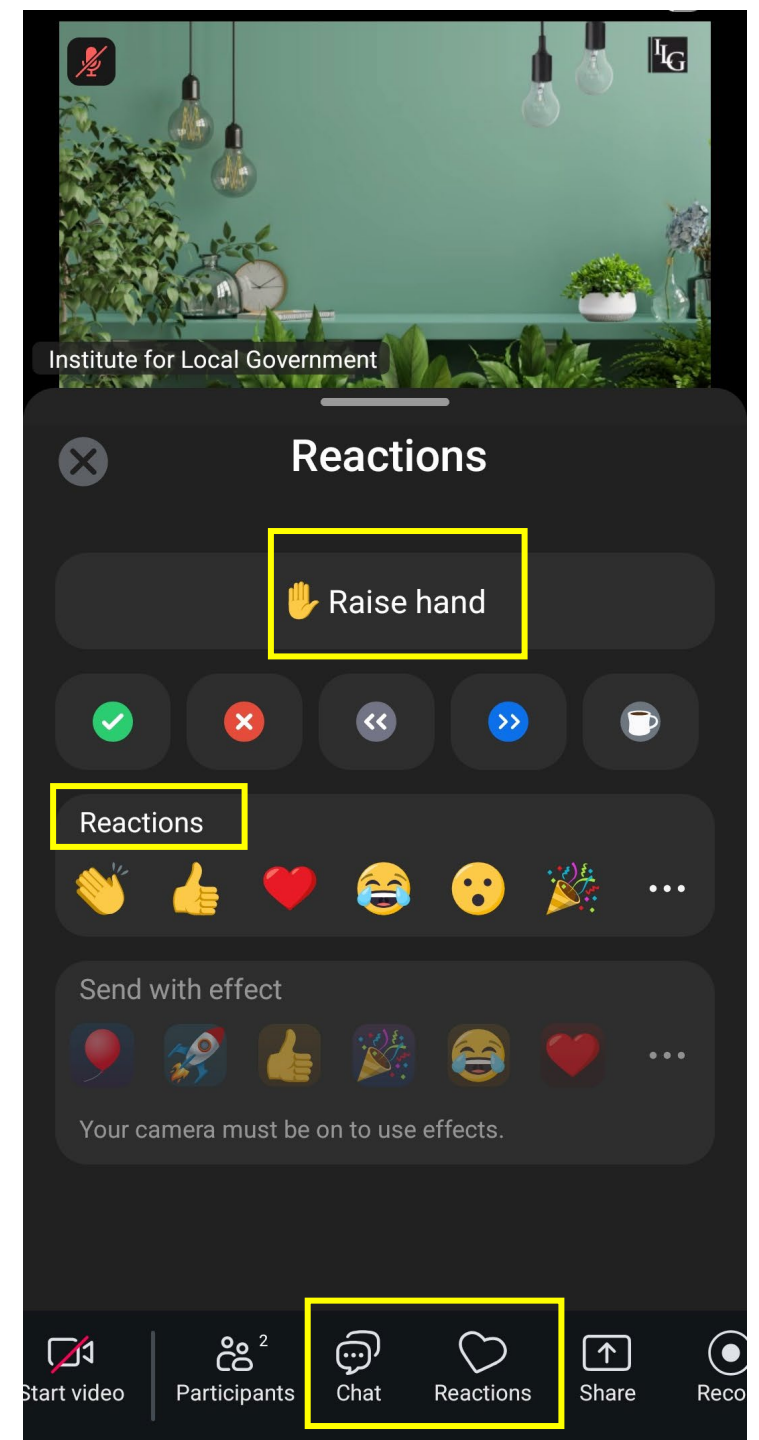
# ZOOM CONTROLS: CELL PHONE

**Swipe** your screen to the right or left to locate your **REACTIONS**, **CHAT** and **TAP TO SPEAK** buttons

Click **REACTIONS** to **RAISE HAND** if you would like to talk

Click **REACTIONS** if you want to share your reactions

Please type into the **CHAT** box at any time during the workshop



# AGENDA



Welcome & Introductions



Environmental Justice Project Progress Update



Overview of the EJ Element Framework & Large Group  
Activity & Discussion



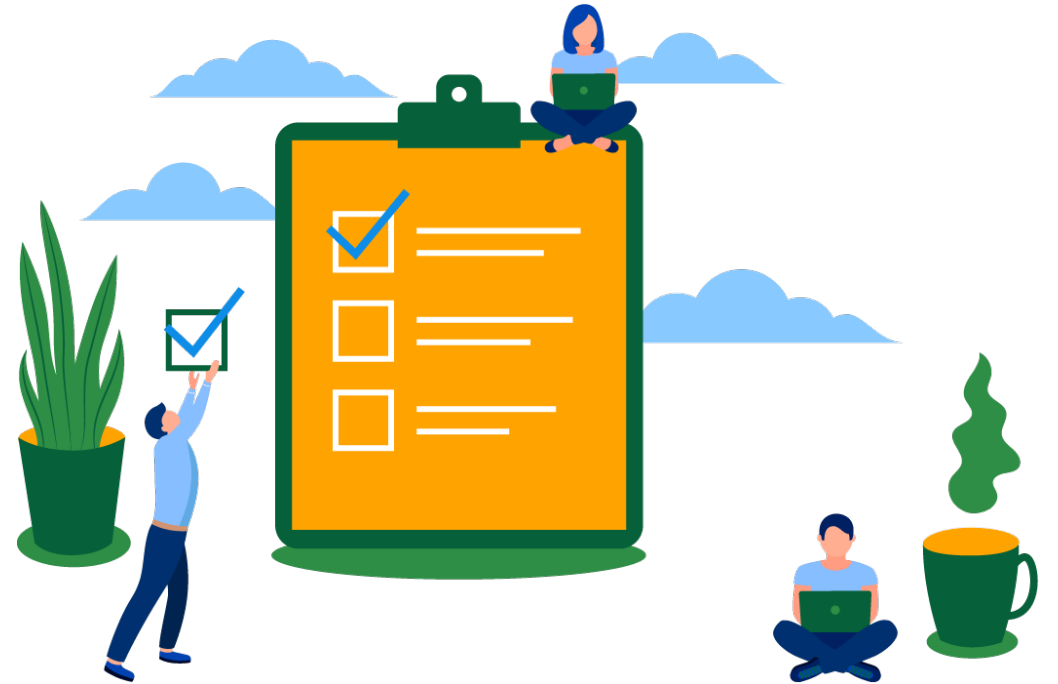
Wrap up & Next Steps

# TELL US ABOUT YOU

## Name

Name/whom do you **represent**  
(residents, yourself,  
stakeholders, nonprofit)

Where is your **favorite place to eat** in Imperial Valley?



# WHERE WE ARE IN THE EJ ELEMENT DEVELOPMENT PROCESS

Completed

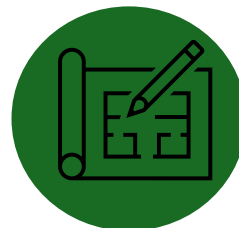


Existing  
Conditions  
Report



First  
Community  
Survey &  
Engagement

We are here



EJ Outline  
and Policy  
Framework



Draft EJ  
Element



Second  
Community  
Survey &  
Engagement



**QUESTIONS?**

# EJ FRAMEWORK AND OUTLINE

## PURPOSE:

- Outlines components, policies, actions, and implementation programs to direct decision-making before preparing the administrative draft EJ Element.
- Provides a high-level overview of the six required sections.
- Includes “Topics to Consider” for possible EJ policies and programs.

## SECTIONS:

1. Pollution exposure and health risks
2. Infrastructure
3. Food access
4. Access to parks and open space and physical activity
5. Safe and sanitary housing
6. Civic engagement

# GROUP ACTIVITY

## AS A GROUP:

- ✓ **Review** EJ Framework Sections & Topics to Consider.
- ✓ Start thinking about what “**Topics to Consider**” for EJ Element policies are the **most important to include** for each section.
- ✓ Use MentiMeter instant polling to **share your thoughts**.

# 1. POLLUTION EXPOSURE AND HEALTH RISKS

Identify objectives and policies to **reduce exposure to pollution**, including **improving air quality** in disadvantaged communities (Gov. Code 65302[h][1][A]).

Identify objectives and policies to **reduce any unique or compounded health risks** in disadvantaged communities not otherwise addressed above (Gov. Code 65302[h][1][A]).

- ❖ Air Quality
- ❖ Water Quality
- ❖ Hazardous Materials and Pollution
- ❖ Pesticides
- ❖ Airport
- ❖ Extreme Heat

# **POLLUTION & HEALTH: AIR QUALITY**

People residing and working in the City may be at risk of adverse health effects, including asthma, as a result of air pollution. Although air quality indicators are moderate within the City, the county and the broader region have some of the highest air pollution levels in the state, and several areas within the City are at risk of greater pollution exposure.

## **Topics to Consider for EJ Element Policies:**

- Regional Coordination and Collaboration / Monitoring
  - Coordinate with Imperial County Air Pollution Control District on air quality.
  - Support participation in the IVAN Air Monitoring Network to monitor air quality.
  - Collaborate with the South-End steering Committee as part of the AB 617 Community Emissions Reduction Program.
- High asthma rates – regional conditions influence the City.
- CARB Toxic “Hot Spots” (locations near facilities in the City of Imperial that emit pollutants)

# MENTIMETER INSTANT POLLING

© 2015 MENTIMETER LTD

## Instructions

Go to

[www.menti.com](http://www.menti.com)

Enter the code

**1866 0820**



Or use QR code

# POLLUTION & HEALTH: WATER QUALITY

Residents remain at potential risk of exposure to unsafe water quality due to reliance on a single water source and documented groundwater threats from leaking underground storage tanks, cleanup sites, and regional contamination such as the New River. While the City's drinking water currently meets regulatory standards, contaminant levels are near threshold limits.

## **Topics to Consider for EJ Element Policies (listed in no particular order):**

- Drinking Water: does not exceed thresholds but could be vulnerable if contaminants rise.
- Diversification of sources of drinking water away from reliance on a single source.
- New River – regional contamination.
- Groundwater: two active LUST (leaking underground storage tank) clean-up sites (one along North Imperial Ave and one along East Barioni Blvd) and two cleanup program sites (Imperial County Airport and Kinder Morgan).
- Low water pressure and temperature of drinking water in the summer.

# **POLLUTION & HEALTH: PESTICIDES\***

Ongoing agricultural activity in and around the City contributes to high pesticide exposure. These exposures pose particular risks for farmworker households and nearby residents, who may face long-term health impacts from pesticide drift, contaminated water, and soil residues.

## **Topics to Consider for EJ Element Policies:**

- Potential groundwater contamination due to widespread herbicide use in the City.
- Potential air contamination due to widespread Telone (a pre-plant soil fumigant) use in the City.
- Current regulation prohibits pesticide use in run-off risk areas and within 0.25 miles of a school or daycare.

\*Pesticides are regulated under state and federal law

# **POLLUTION & HEALTH: EXTREME HEAT**

Extreme heat not only threatens vulnerable populations directly but also exacerbates air pollution, compounding health risks for residents. Summer heat in the City also presents a significant barrier to outdoor recreation, as extreme temperatures can make it uncomfortable and even unsafe for residents to walk to parks or participate in outdoor activities.

## **Topics to Consider for EJ Element Policies:**

- Poor air quality exacerbated by extreme heat.
- Existing educational outreach and cooling center and hydration station program.
- Extreme heat is barrier to outdoor physical activity and recreation during the summer.
- Other health risks.
- Community Survey: Shaded parking, more shade and indoor places to play.

## 2. INFRASTRUCTURE

Identify objectives and policies to **promote public facilities** in disadvantaged communities (Gov. Code 65302[h][1][A]).

- ❖ Water and Sewer Systems
  - ❖ Stormwater Drainage
  - ❖ Roadways and Sidewalk Conditions
- ❖ Access to Public Transit and Active Transportation Patterns
- ❖ Other Community Facilities

# INFRASTRUCTURE: WATER AND SEWER SYSTEMS

The City's water and sewer systems provide adequate capacity, while a small water storage deficit has been identified. Multiple near- and long-term water system upgrades are underway. Canals, which supply water for agricultural and urban uses, are prevalent throughout the City and may pose risks due to low flow (e.g., water supply reliability & reduced power generation).

## **Topics to Consider for EJ Element Policies:**

- Resiliency and reliability of the water system.
- Odor emissions from open-air lagoon treatment centers (one in Imperial and one in El Centro), near Wildflower.
- Resiliency / Reliability of sewer system: limited service to areas of future growth, some locations still rely on septic tanks.
- Infrastructure in unincorporated communities: Ironwood subdivision has City water but not wastewater service.
- Future annexations.

# INFRASTRUCTURE: ROADWAYS AND SIDEWALK CONDITIONS

Recent capital projects have prioritized pedestrian safety and connectivity, especially along Aten Road and the downtown area. However, road and sidewalk networks remain incomplete.

## **Topics to Consider for EJ Element Policies:**

- Unimproved road segments connecting to future housing development (Ralph Road to serve Morningstar).
- Missing sidewalks.
- Pedestrian/Crosswalk improvements, missing ADA curb ramps, and missing sidewalks (primarily in downtown).
- Existing sidewalk inspection and maintenance program.
- Community Survey: Safe routes to school; lighting.

# INFRASTRUCTURE: PUBLIC TRANSIT AND ACTIVE TRANSPORTATION

The City is primarily car-dependent, with no residents recorded as using public transit, and high car ownership rates. There are only 0.8 miles of bike facilities, which consist solely of the Imperial Valley College Bike Path along Aten Road. The bike path has limited connections to other neighborhoods and requires further improvements.

## Topics to Consider for EJ Element Policies:

- High rates of car commuters: A vast majority of commutes are by car (87%) and are under 30 minutes long. Twelve percent (12%) of commuters are carpools.
- Paratransit is available for seniors, people with disabilities, and others with limited mobility.
- Inconsistent paving on the Imperial College Bike Path.
- Most major arterials lack cycling infrastructure.

### 3. FOOD ACCESS

Identify objectives and policies to **promote food access** in disadvantaged communities (Gov. Code 65302[h][1][A]).

- ❖ Access to Grocery Stores
- ❖ Local Food Programs
- ❖ Restaurants, Convenience Stores, and Fast-Food Locations

# **FOOD ACCESS: ACCESS TO GROCERY STORES**

The City only has one grocery store located downtown and most neighborhoods are not within walking distance. Residents are dependent on driving for access to fresh food and larger grocery options located in the City in El Centro, but within a 15-minute drive from most of the City.

## **Topics to Consider for EJ Element Policies:**

- Additional grocery stores/lack of grocery stores.
- Community gardens/farmers markets.
- Community Survey: Need more healthy food options, with quality fruits and vegetables.

## 4. ACCESS TO PARKS AND OPEN SPACE, AND PHYSICAL ACTIVITY

Identify objectives and policies to **promote physical activity** in disadvantaged communities (Gov. Code 65302(h)(1)(A)).

Most neighborhoods are within a 15-minute walk to a park, but some subsidized housing sites and new northern developments remain underserved.

### Topics to Consider for EJ Element Policies:

- Lack of park access city-wide:
  - current park acreage shortfall, with a regional park planned to bridge the gap,
  - some subsidized housing is not located within a 10-minute walkshed of a park (Imperial Gardens and Villa Lara Apartments).
- Extreme heat is a barrier to outdoor physical activity and recreation during the summer.
- City does not own most of the summer recreation facilities it uses (schools and pool).
- Cooling center and hydration station at the library.
- Lack of indoor recreation facilities.
- Community Survey: Need for maintenance, shade and trees, safety, no large recreation areas; pool improvements; and indoor recreation is a need due to weather.

## 5. SAFE AND SANITARY HOUSING

Objectives and policies to **promote safe and sanitary homes** in disadvantaged communities (Gov. Code 65302[h][1][A]).

- ❖ Housing Density, Distribution, and Land Use Compatibility
- ❖ Housing Conditions
- ❖ Affordability of Housing

# **SAFE AND SANITARY HOUSING: HOUSING DENSITY, DISTRIBUTION, AND LAND USE COMPATIBILITY**

Most housing in the City is designated low and low-medium-density residential in the general plan, with high-density residential limited to small pockets in and around downtown and select corridors. The centrally located Imperial County Airport influences land use across much of the City, with many high- and low- to medium-density residential areas falling within noise- and emissions-affected zones.

## **Topics to Consider for EJ Element Policies:**

- Residential areas falling within the impact area of the airport.
- Development of subsidized housing.
- Potential sunseting of the affordability restrictions of Imperial Villa Apartment.
- The only public housing development is located in the impact area of the airport.

# SAFE AND SANITARY HOUSING: HOUSING CONDITIONS

Housing is beginning to age, and overcrowding is a minor concern.

## Topics to Consider for EJ Element Policies:

- Balancing average household size with housing stock (4-person households make the largest share in the City for both owners and renters, but 3-bedroom houses make up the largest share of housing units).
- The share of overcrowded renter-occupied households has doubled, and renter-occupied severely overcrowded households has increased slightly since 2018.
- Aging housing stock: 46 percent of housing in the City is over or approaching 30 years of age.
- Community Survey: Many issues noted with Community Facilities District, housing maintenance, and code enforcement issues.

## 6. CIVIC ENGAGEMENT

Identify objectives and policies to **promote civic engagement** in the public decision-making process in disadvantaged communities (Gov. Code 65302(h)(1)(B)).

Internet access may be a barrier to civic engagement for a notable minority of the population.

### **Topics to Consider for EJ Element Policies:**

- Limited access to computers or internet: 7-18% lacking computer or a broadband subscription.
- Systemic socioeconomic and language barriers may limit full political participation among low-income, non-English-speaking, and historically underrepresented residents.
- Community Survey: Lack of awareness of meetings, personal or family time constraints, feeling feedback won't be taken seriously.

# NEXT STEPS

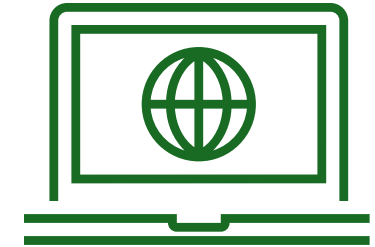


Next committee  
meeting

**Tuesday, April 21 at  
5:30 pm**



Second  
community  
survey &  
**engagement**



Visit the city's website  
for **project information**  
and materials

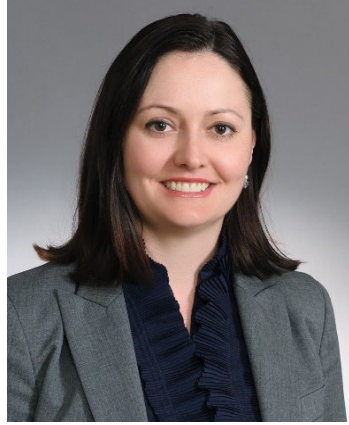
<https://www.cityofimperial.org/EJ>

THANK YOU



**Yvonne Cordero**

[ycordero@imperial.ca.gov](mailto:ycordero@imperial.ca.gov)



**Hanna Stelmakhovych**

[hstelmakhovych@ca-ilg.org](mailto:hstelmakhovych@ca-ilg.org)



**Jon Barilone**

[jbarilone@ca-ilg.org](mailto:jbarilone@ca-ilg.org)



# ENVIRONMENTAL JUSTICE PROJECT TEAM



- Othon Mora, City of Imperial
- Yvonne Cordero, City of Imperial
- Hanna Stelmakhovych, ILG
- Melissa Kuehne, ILG
- Jon Barilone, ILG
- Matthew Gelbman, Ascent

