

DATE SUBMITTED 04/28/2021
 SUBMITTED BY COMMUNITY DEVELOPMENT DIRECTOR
 DATE ACTION REQUIRED 05/05/2021

COUNCIL ACTION (x)
 PUBLIC HEARING REQUIRED ()
 RESOLUTION ()
 ORDINANCE 1ST READING ()
 ORDINANCE 2ND READING ()
 CITY CLERK'S INITIALS 5/6

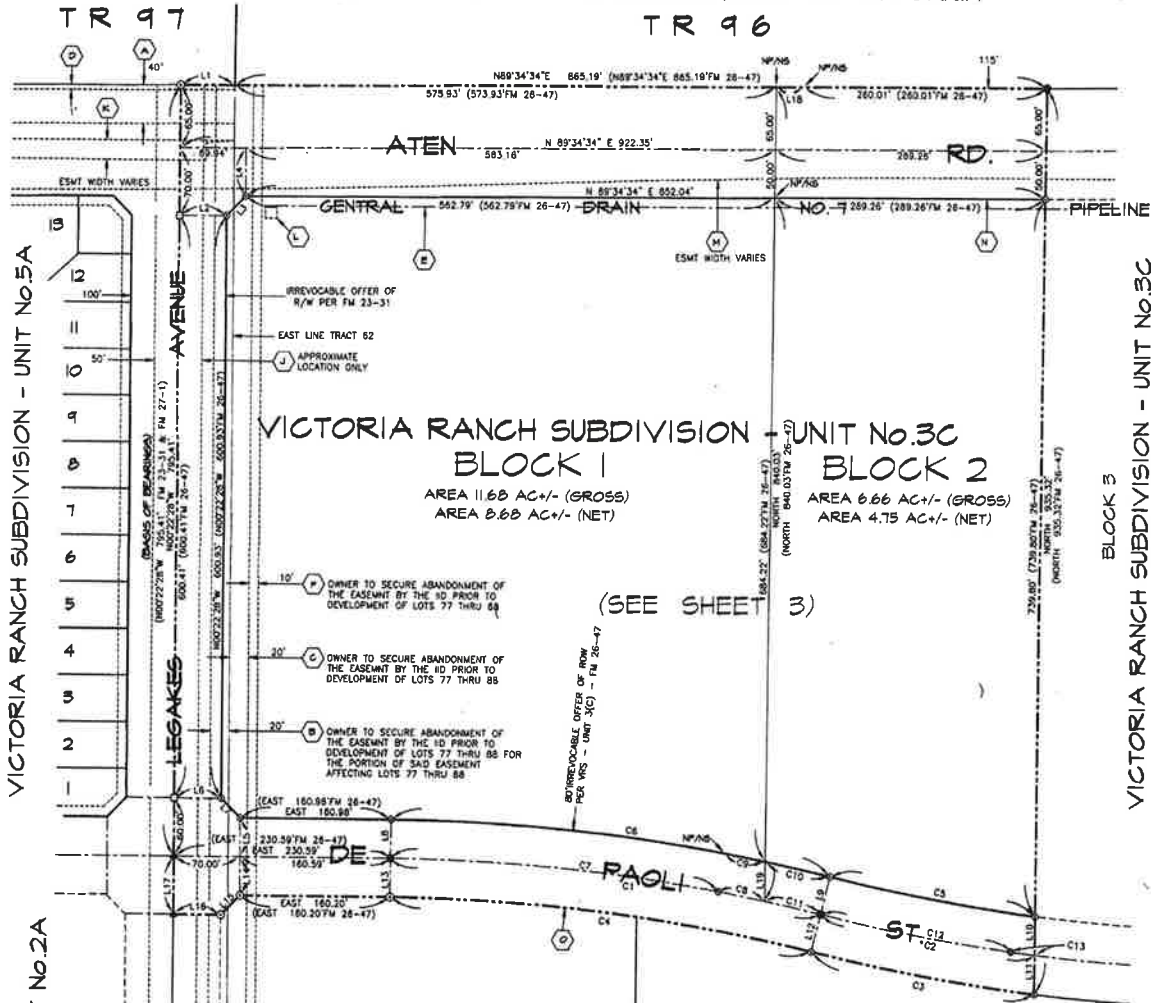
**IMPERIAL CITY COUNCIL
 AGENDA ITEM**

SUBJECT: DISCUSSION/ACTION: VICTORIA RANCH SUBDIVISION UNIT 6A – PHASE 8 • LOTS 8-11, 77-81 and 104-108 PER FM 27/76-78 1. AUTHORIZE PARTIAL RECONVEYANCE TO IMPERIAL RANCH PARTNERS, LLC.	
DEPARTMENT INVOLVED:	COMMUNITY DEVELOPMENT
BACKGROUND/SUMMARY: City staff has been conducting regular field inspections during the construction of the off-site street improvements for Victoria Ranch Subdivision Unit 6A – Phase 8. Said improvements are substantially completed. The Community Development Department has been contacted by the developer requesting Partial Reconveyance of the above-referenced lots. See Exhibit 1 attached herewith for details.	
FISCAL IMPACT: NO FISCAL IMPACT	ADMIN SERVICES SIGN INITIALS <u>JK</u>
STAFF RECOMMENDATION: 1. Staff recommends authorization of partial reconveyance regarding lots 8-11, 77-81 and 104-108 Per FM 27/76-78 to Imperial Ranch Partners, LLC.	DEPT. INITIALS <u>OM</u>
MANAGER'S RECOMMENDATION:	CITY MANAGER'S INITIALS <u>AB</u>
MOTION: SECONDED: APPROVED () REJECTED () AYES: DISAPPROVED () DEFERRED () NAYES: ABSENT: REFERRED TO:	

VICTORIA RANCH SUBDIVISION - UNIT No. 6A

A RE-SUBDIVISION OF BLOCKS 1 AND 2 OF VICTORIA RANCH SUBDIVISION - UNIT No. 3C,
IN THE CITY OF IMPERIAL, COUNTY OF IMPERIAL, STATE OF CALIFORNIA

FM B27 P77



VICTORIA RANCH SUBDIVISION
BLOCK 1
AREA 11.66 AC +/- (GROSS)
AREA 8.66 AC +/- (NET)

VICTORIA RANCH SUBDIVISION
BLOCK 2
AREA 6.66 AC +/- (GROSS)
AREA 4.75 AC +/- (NET)

(SEE SHEET 3)

BLOCK 6
VICTORIA RANCH SUBDIVISION - UNIT No. 3C

NO.	LENGTH	RADIUS	DELTA	REFER
C1	460.84	2000.00	13°12'08"	FM 28-47
C2	233.77	2000.00	6°41'49"	FM 28-47
C3	243.00	2040.00	8°49'30"	FM 28-47
C4	457.53	1960.00	13°12'08"	FM 28-47
C5	451.83	1960.00	13°12'08"	FM 28-47
C6	224.53	1960.00	6°33'49"	FM 28-47
C7	350.05	2000.00	10°01'41"	FM 28-47
C8	50.33	2000.00	1°28'31"	FM 28-47
C9	43.23	2040.00	1°12'51"	FM 28-47
C10	69.79	2040.00	1°57'36"	FM 28-47
C11	60.47	2000.00	1°43'58"	FM 28-47
C12	207.42	2000.00	5°58'32"	FM 28-47
C13	28.34	2000.00	0°48'13"	FM 28-47

NO.	LENGTH	BEARING	REFER
L1	57.59	N89°34'34"E	FM 26-47
L2	50.00	N89°34'34"E	FM 26-47
L3	28.27	N44°38'03"E	FM 26-47
L4	50.00	N00°25'28"W	FM 26-47
L5	40.00	N00°33'22"E	FM 26-47
L6	50.00	N00°33'42"W	FM 26-47
L7	28.19	N45°11'14"W	FM 26-47
L8	40.00	N00°00'00"E	FM 26-47
L9	40.00	N13°12'08"E	FM 26-47
L10	40.00	N13°12'08"E	FM 26-47
L11	40.26	N00°00'00"E	FM 26-47
L12	40.00	N13°12'08"E	FM 26-47
L13	40.00	N00°00'00"E	FM 26-47
L14	40.00	N00°33'42"W	FM 26-47
L15	28.38	N44°48'42"E	FM 26-47
L16	50.00	N89°34'34"E	FM 26-47
L17	60.00	N00°22'28"W	FM 26-47
L18	28.25	N89°34'34"E	FM 26-47
L19	40.80	N00°00'00"E	FM 26-47

BASIS OF BEARINGS:
THE BASIS OF BEARINGS FOR THIS SURVEY IS THE BEARING OF THE CENTERLINE OF LEGAKES AVENUE AS INDICATED BY FINAL MAP RECORDED IN BOOK 21, PAGE 1 OF FINAL MAPS IN THE OFFICE OF THE IMPERIAL COUNTY RECORDER BEING N00°22'28" W.

SURVEYOR'S NOTES:
1. A 3/4" IRON PIPE WITH PLASTIC PLUG STAMPED 'LS T101 G. OLSON' WILL BE SET AT ALL CORNERS, UNLESS SAID CORNERS ARE INDICATED AS MONUMENTED OTHERWISE WITHIN 1 YEAR OF THE COMPLETION OF PUBLIC IMPROVEMENTS. IF SAID CORNERS FALL IN AREAS OF CONCRETE, A LEAD AND BRASS TAG STAMPED 'OLSON LS T101' WITH A GAPPED 'X' MARK WILL BE PLACED INSTEAD OF THE MENTIONED IRON PIPE.
2. THE INCREMENTAL DISTANCES SHOWN ON THIS MAP MAY NOT SUM TO THE OVERALL DISTANCE INDICATED DUE TO ROUND OFF ERROR.

LEGEND:

- SEARCH FOUND NOTHING. SET CONCRETE CYLINDER IN HELL BOX WITH BRASS TAG, STAMPED 'LS T101 G. OLSON'
- DID NOT FIND 3/4" I.P. W/ PLASTIC PLUG, STAMPED 'LS T101 G. OLSON'. SET PER VICTORIA RANCH SUBDIVISION - UNIT NO. 3C - FM 28-47. BELIEVE MONUMENTS DESTROYED BY FARMING OPERATIONS. SET NEW 3/4" I.P. WITH PLASTIC PLUG, STAMPED 'LS T101 G. OLSON' TO REPLACE SAME.
- SET 5/4" I.P. W/ PLASTIC PLUG, STAMPED 'LS T101 G. OLSON'
- ▲ DID NOT FIND 3/4" I.P. W/ PLASTIC PLUG, STAMPED 'LS T101 G. OLSON'. BELIEVE MONUMENTS DESTROYED BY FARMING OPERATIONS. SET 6IN SPIKE WITH BRASS WASHER, STAMPED 'LS T101 G. OLSON', FLUSH WITH PAVEMENT TO REPLACE SAME.
- FOUND A 4" CONCRETE CYLINDER, WITH BRASS TAG, STAMPED 'LS T101 G. OLSON' IN HELL BOX, PER VICTORIA RANCH SUBDIVISION - UNIT NO. 3B(2) - FM 21-01
- (FM) RECORDED DATA PER FINAL MAP RECORDED IN BOOK AND PAGE AS SPECIFIED
- N/P/S NOTHING FOUND, NOTHING SET.
- Ⓧ RECORDED EASEMENT PER SHEET 1
- SUBDIVISION BOUNDARY

LOT "F"
VICTORIA RANCH SUBDIVISION - UNIT No. 2A

VICTORIA RANCH SUBDIVISION - UNIT No. 5A

VICTORIA RANCH SUBDIVISION - UNIT No. 3C
BLOCK 3

Exhibit 1



