

DATE SUBMITTED 5/28/25  
 SUBMITTED BY PUBLIC SERVICES  
 DATE ACTION REQUIRED 06/04/25

COUNCIL ACTION (X)  
 PUBLIC HEARING REQUIRED ( )  
 RESOLUTION ( )  
 ORDINANCE 1<sup>ST</sup> READING ( )  
 ORDINANCE 2<sup>ND</sup> READING ( )  
 CITY CLERK'S INITIALS ( )

## IMPERIAL CITY COUNCIL AGENDA ITEM

SUBJECT: DISCUSSION/ACTION: **Vehicle Surplus**

1. Approval to declare vehicles as surplus
2. Authorize sale of vehicles declared surplus

DEPARTMENT INVOLVED: PUBLIC SERVICES

**BACKGROUND/SUMMARY:**

The Public Services Department is requesting the Imperial City Council's approval to declare the following vehicles as surplus:

Year	Make/Model	Type
2003	Ford F150	Passenger
2006	Pontiac G6	Passenger
2014	Dodge Ram 3500	Utility Truck
2014	Dodge Ram 3500	Utility Truck
2014	Dodge Ram 2500	Flatbed

Although the vehicles remain technically operational, their recurring malfunctions present significant challenges that impact both financial efficiency and operational reliability. These issues result in increased maintenance costs, frequent disruptions to service, and a reduced level of dependability, even when repairs temporarily restore functionality.

The decision to surplus these vehicles, despite their operability, is a proactive measure aimed at prioritizing long-term cost savings, safety, and uninterrupted operations.

Surplus these vehicles from the fleet will allow us to reinvest in newer vehicles that better align with the organization's operational standards.

**FISCAL IMPACT:**

None

**FINANCE INITIALS**

JMS

**STAFF RECOMMENDATION:**

It is the department's recommendation to approve the vehicles as surplus and authorize sale of the vehicles.

**DEPT. INITIALS**

Jmg

**MANAGER'S RECOMMENDATION:**

approve

**CITY MANAGER'S INITIALS**

DTM

**MOTION:**

SECONDED:

AYES:

NAYES:

ABSENT:

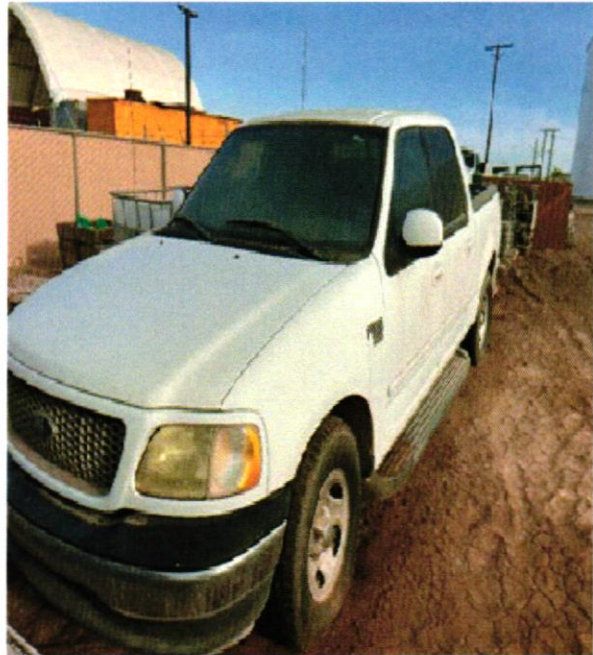
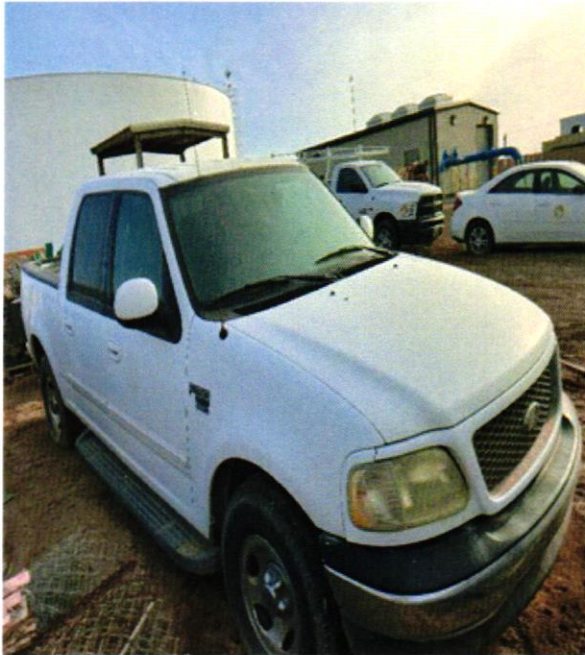
APPROVED ( )

DISAPPROVED ( )

REJECTED ( )

DEFERRED ( )

REFERRED TO:



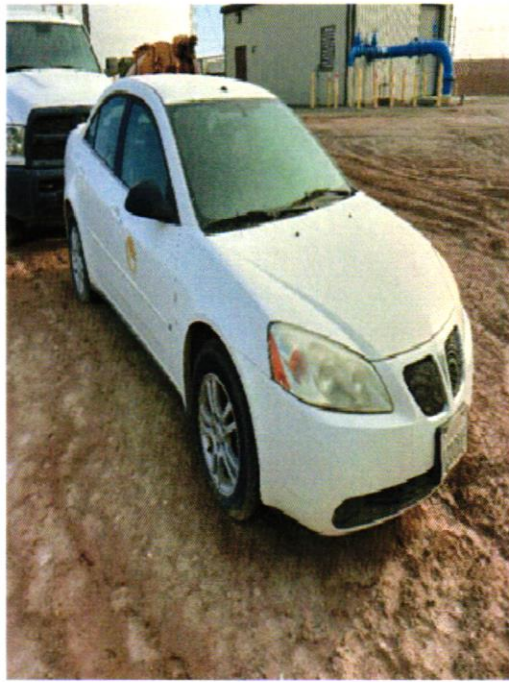
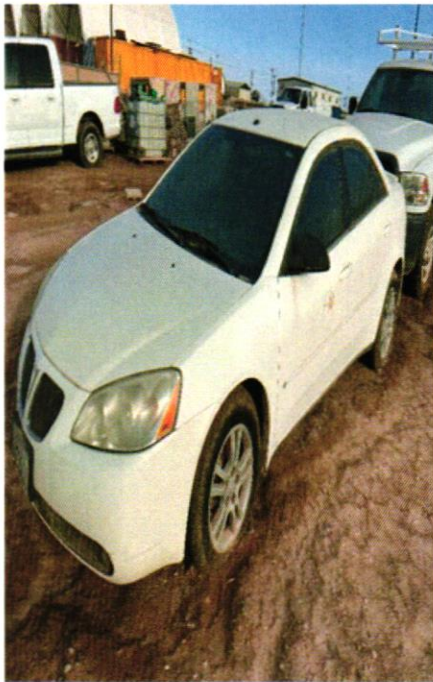
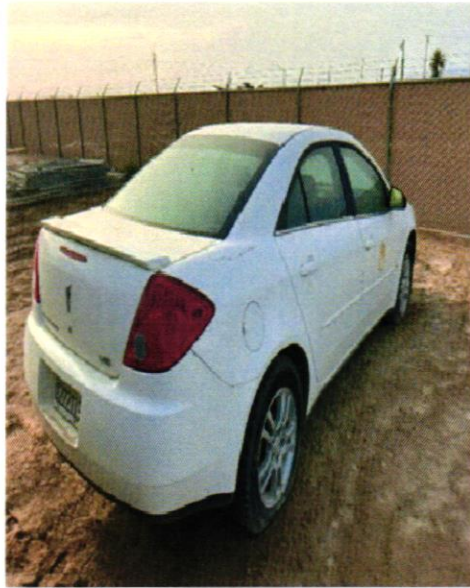
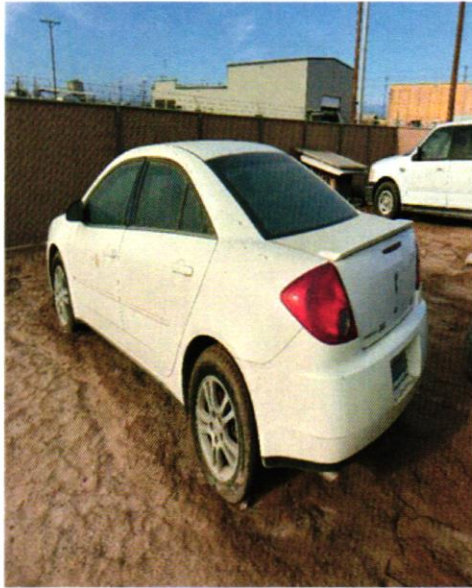
**2003 FORD F-150 1**

**BODY TYPE: CREW CAB PICKUP**

**MILES: 164455**

**Vehicle runs and drives. A/C is malfunctioning and motor leaks oil.**





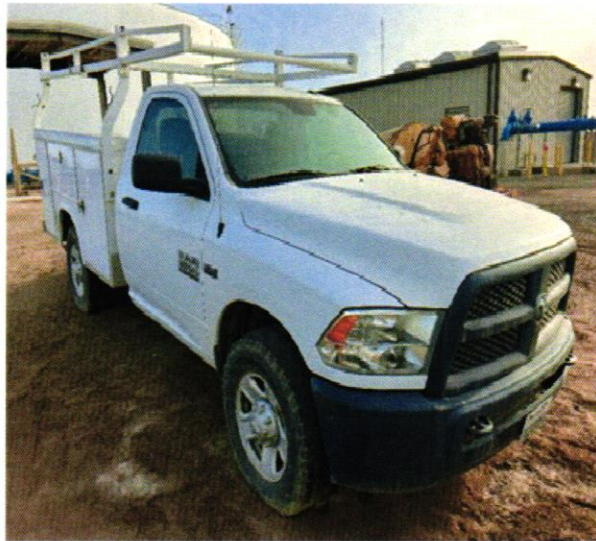
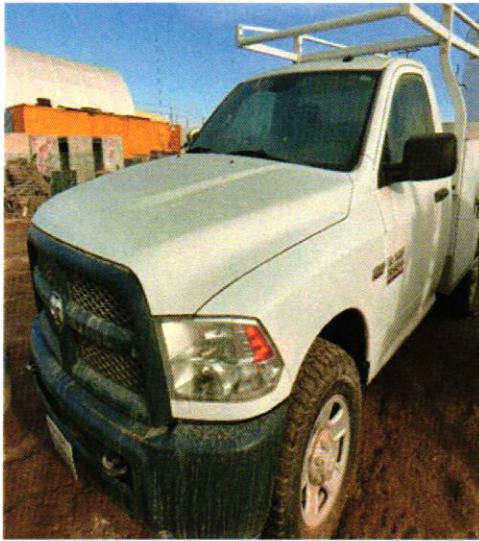
**2006 PONTIAC G6**

**BODY TYPE: SEDAN**

**MILES: 50524**

**Vehicle runs and drives. Vehicle's exterior paint is deteriorated.**





**2014 RAM 3500**  
**BODY TYPE: CAB & CHASSIS**  
**MILES: 80337**  
**Vehicle runs and drives. Has motor issues.**





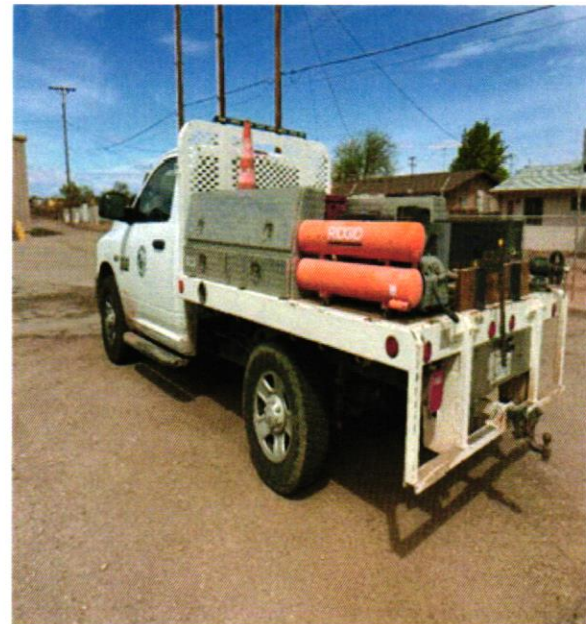
**2014 RAM 3500**

**BODY TYPE: CAB & CHASSIS**

**MILES: 65832**

**Vehicle runs and drives. It has problems while starting and overheats.**





**2014 RAM 2500 (FLATBED)**  
**BODY TYPE: STANDARD CAB PICKUP**  
**MILES: 63294.8**  
**Vehicle runs and drives. It has problems while starting**